

# Standardized baselines: submission process and status

**Karla Solís**

**Team Lead**

**Regional Collaboration Centre St. George's**

Regional Workshop on CDM & NAMAs

1<sup>st</sup> September 2014



- Background
- SBL submission
- Support to develop SBLs
- Status of SBL submissions



## CDM Standardized Baselines approach

---

SBL approach allows establishing **baselines** for countries or group of countries in a specific sector.

### What can we do with standardized baselines?

- ✓ Determines additionality
- ✓ Determines carbon emission factors

### Why standardised baselines ?

- Reduce transaction costs
- Facilitate access to the CDM to unrepresented regions
- Cover a range of activities under a sector
- Allows establishing baselines for sectoral reports of non-CDM activities
- Provides a systematic and conservative approach for GHG accounting



## Who may propose standardized baseline?

---

- Parties, project participants, international industry organizations or admitted observer organizations may propose a SBL through the DNA
- The DNA shall submit the SBL proposal to the secretariat
- SBL for a group of parties:
  - It shall be approved by the DNAs of all Parties
  - Any one of the DNAs shall submit the SBL proposal to the secretariat

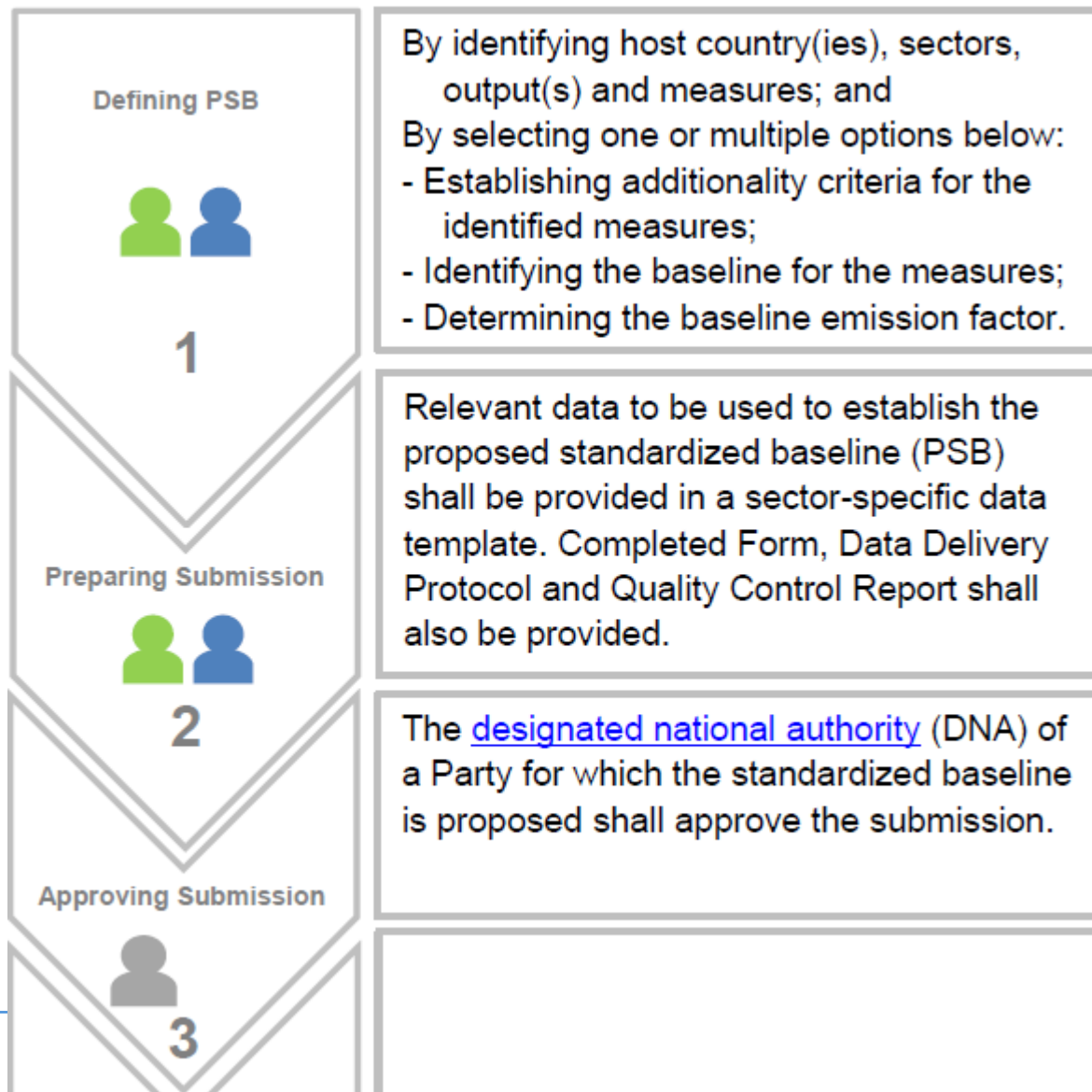
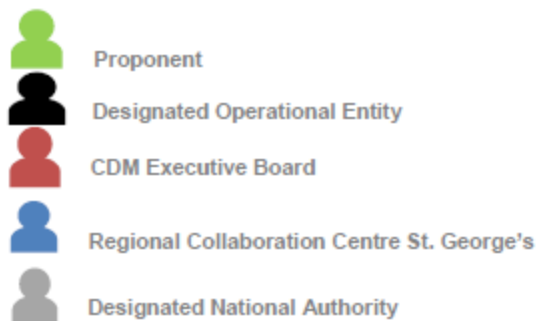
**SUBMISSION**



# Standardized baselines cycle – Five key steps




## Legend:

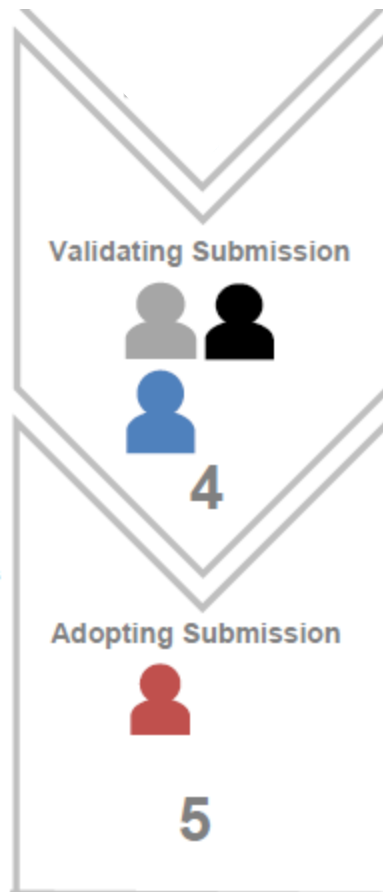


## Standardized baselines cycle – Five key steps

**FREE  
Assessment  
Report!**

### Legend:

-  Proponent
-  Designated Operational Entity
-  CDM Executive Board
-  Regional Collaboration Centre St. George's
-  Designated National Authority



Where applicable, the quality of the data is validated and an Assessment Report is prepared by a private certifier, known as designated operational entity (DOE). DNA submits the PSB to: [sdm-ssu-methworkflows@unfccc.int](mailto:sdm-ssu-methworkflows@unfccc.int).

Once adopted by the CDM Executive Board, standardized baseline is valid for maximum 3 years. Subsequent update shall include data of the 3 most recent years.



Found under *More information*: <https://cdm.unfccc.int/stakeholder/rcc/index.html> /

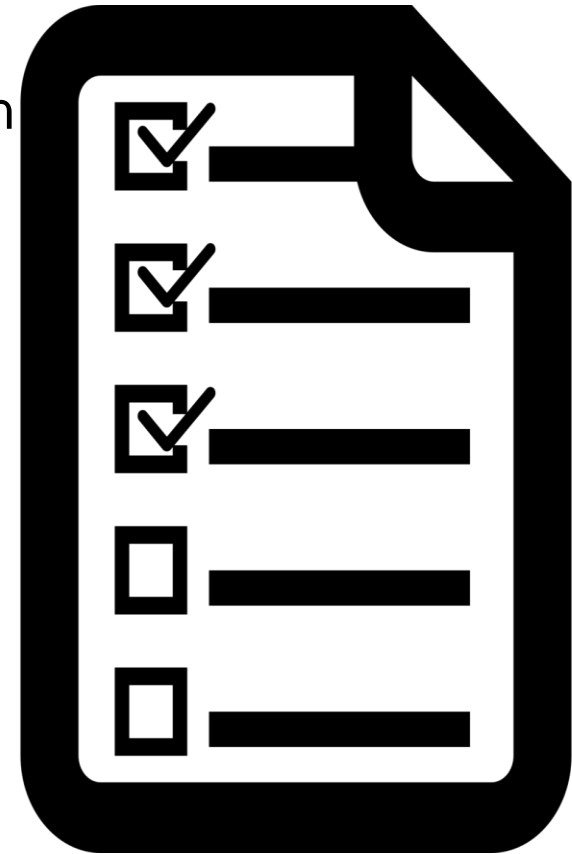
- A. Assessment report - Parties with less than 10 or fewer registered CDM project activities as of 31 December 2010, may
  - request for funding from the secretariat; or
  - for the first three submissions the report is prepared by the secretariat
- B. Exception are not applicable for SBL submissions for a group of parties
- C. Sector specific data templates shall be used to report data used, these are to be requested to the secretariat
- D. SBL submissions are free of charge



## Documents to be submitted

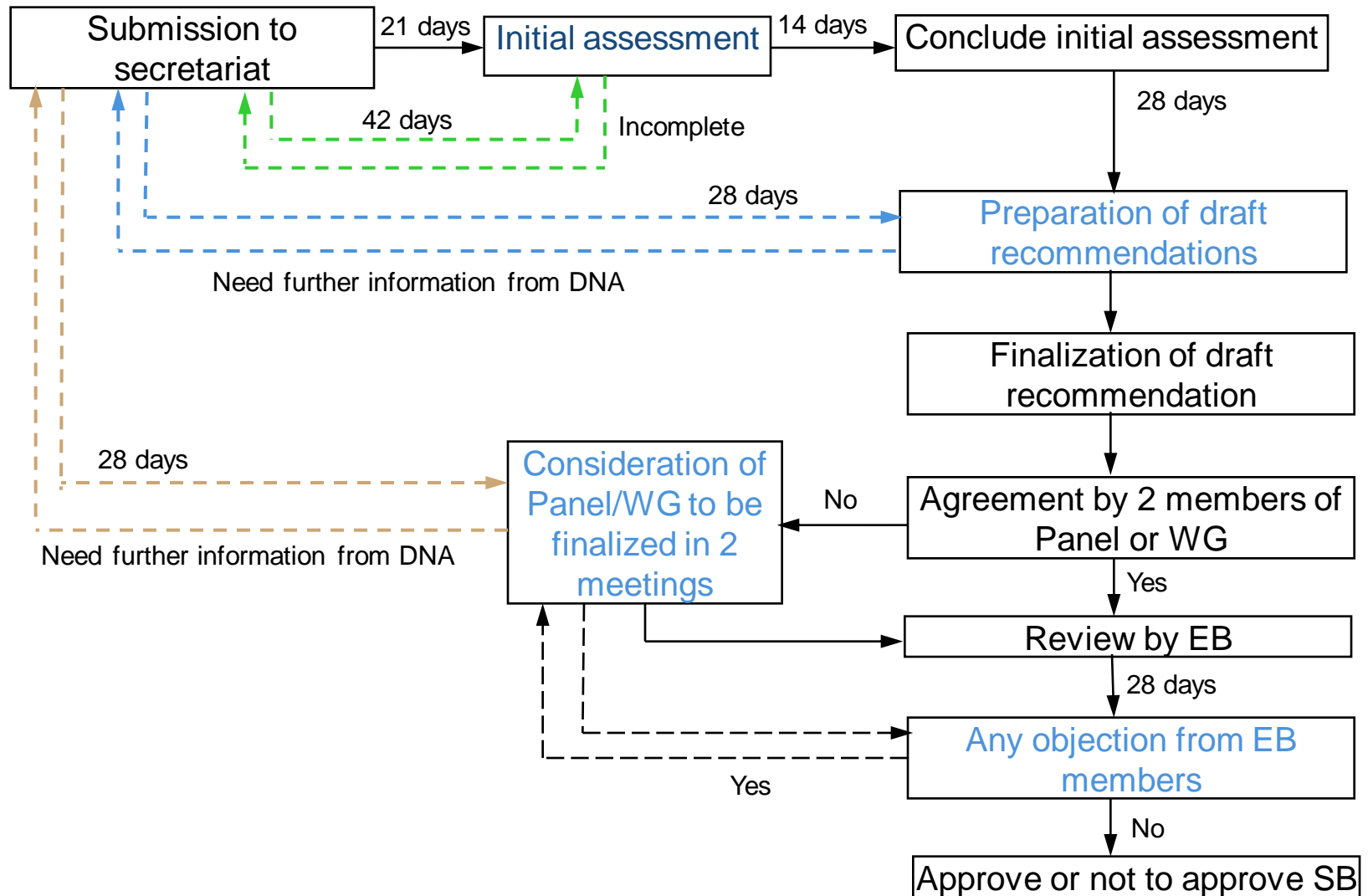
---

- a) Proposed standardized baseline submission form, CDM-PSB-FORM
- b) Applicable support documents. E.g. calculation sheets, data sources, reports, statistics, etc.
- c) Letters of approval from all the DNAs of the Parties to which it applies
- d) If applicable, an assessment report on the quality of the data collection, processing and compilation
- e) If applicable, Quality assurance and quality control report
- f) If applicable, Data Delivery Protocol





## Submission process



- Top-down approach – the secretariat, since 2014
  - DNAs are directly supported by the secretariat
  - 13 DNAs requested support, 1 DNA LAC (Peru), others from Africa
  - Power, cooking stoves, waste, charcoal and construction sectors have been prioritized
- Bottom-up approach – RCCs, since 2013
  - DNAs are directly supported by RCCs
  - ~10 SBLs are proposed, 4 from Caribbean region
  - Currently working on power, waste, transport and cement sectors
- UNEP DTU. Since 2012
- Independent consultants



Sector/ Measure	Type of SB Approach	Country(ies)	Methodologies/Guidelines
Power (grid emission factor)/2	Emission Factor	Southern African Region comprising of Nine (9) countries	Tool to calculate the emission factor for an electricity system version 2.2
Charcoal production for consumption in households and SMEs/1,2,3,4	Additionality Baseline Emission Factor	The Republic of Uganda	Guidelines for the establishment of sector specific standardized baselines (version 2.0)  Small-scale methodology (AMS-III.BG)
Power (grid emission factor)/2	Emission Factor	Republic of Uzbekistan	Tool to calculate the emission factor for an electricity system version 3.0.0
Rice mill/2	Additionality Baseline Emission Factor	Cambodia	Guidelines for the establishment of sector specific standardized baselines (version 2.0), Guideline for demonstrating additionality of micro scale project activities (version 4.0), AMS-I.B.

Sector/ Measure	Countries	Region	Status
Power [9]	<b>Belize</b> Cape Verde Mauritius Sao Tome & Principe <b>Dominican Republic</b> Republic of Armenia Uganda Rwanda Ethiopia	LAC, 2 East Europe, 1 Africa, 6	Assessment Report Initial assessment idem
Waste [5]	Madagascar Sao Tome & Principe <b>Dominican Republic</b> <b>Antigua &amp; Barbuda</b> <b>Belize</b>	LAC, 3 Africa, 2	Initial assessment
Clinker [1]	Ethiopia	Africa	Initial assessment
Rice cultivation [1]	Philippines	Asia	Initial assessment

## Key contacts:

[rccbogota@unfccc.int](mailto:rccbogota@unfccc.int)  
[rccstgeorges@unfccc.int](mailto:rccstgeorges@unfccc.int)

[sdm-ssu-methworkflows@unfccc.int](mailto:sdm-ssu-methworkflows@unfccc.int)>

## Key links for SBL references:

[http://cdm.unfccc.int/methodologies/standard\\_base/index.html](http://cdm.unfccc.int/methodologies/standard_base/index.html)

<https://cdm.unfccc.int/stakeholder/rcc/index.html>



GRACIAS 😊

